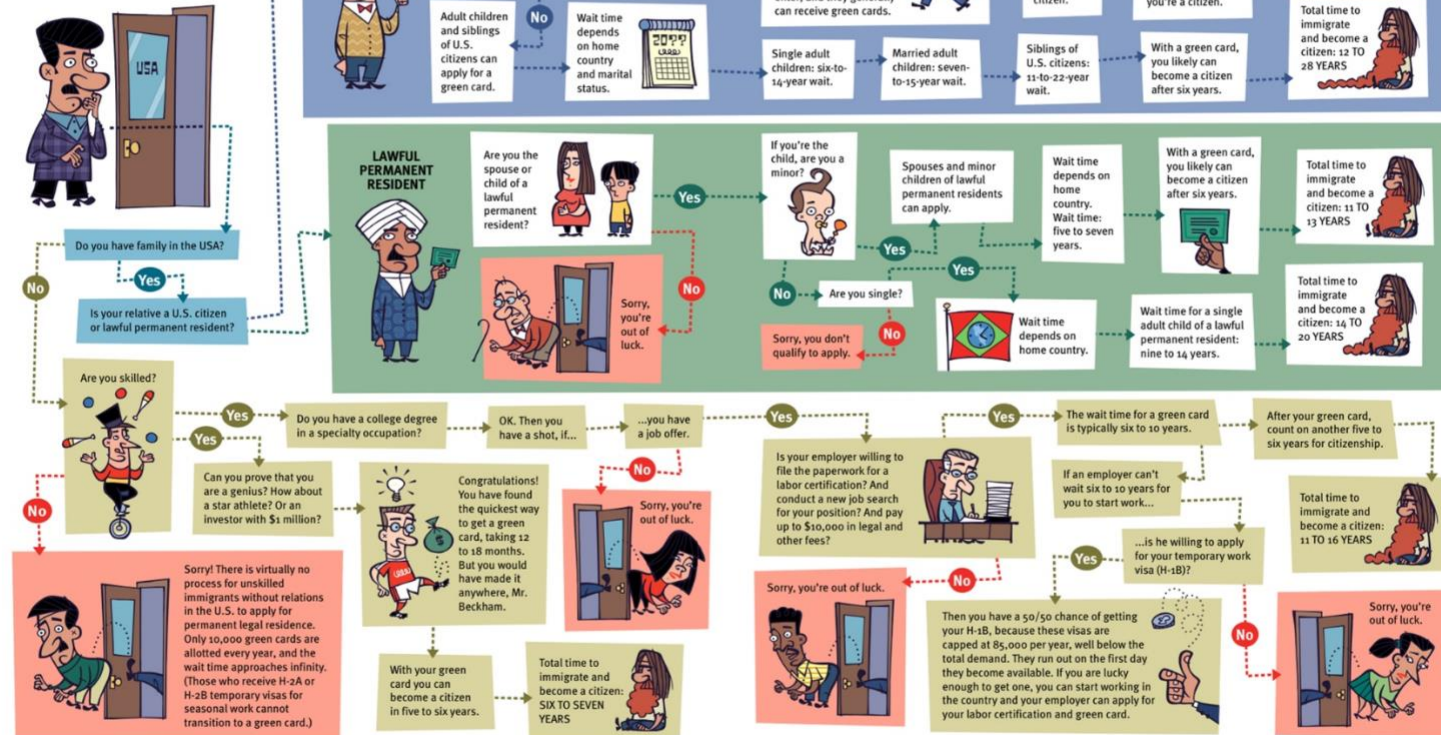


What Part of Legal Immigration Don't You Understand? *Mike Flynn and Shikba Dalmia*

Illustrated by Terry Colon

Opponents of illegal immigration are fond of telling foreigners to "get in line" before coming to work in America. But what does that line actually look like, and how many years (or decades) does it take to get through? Try it yourself!



(Flynn is director of government affairs and Dalmia is a senior policy analyst at Reason Foundation. This chart was developed by Reason Foundation in collaboration with the National Foundation for American Policy.)